

Survey Map

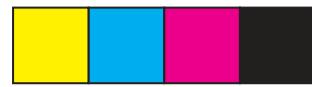
In order to preserve the scale, the map should be printed in colour onto A3 paper.

When printing, select 'Actual size'.

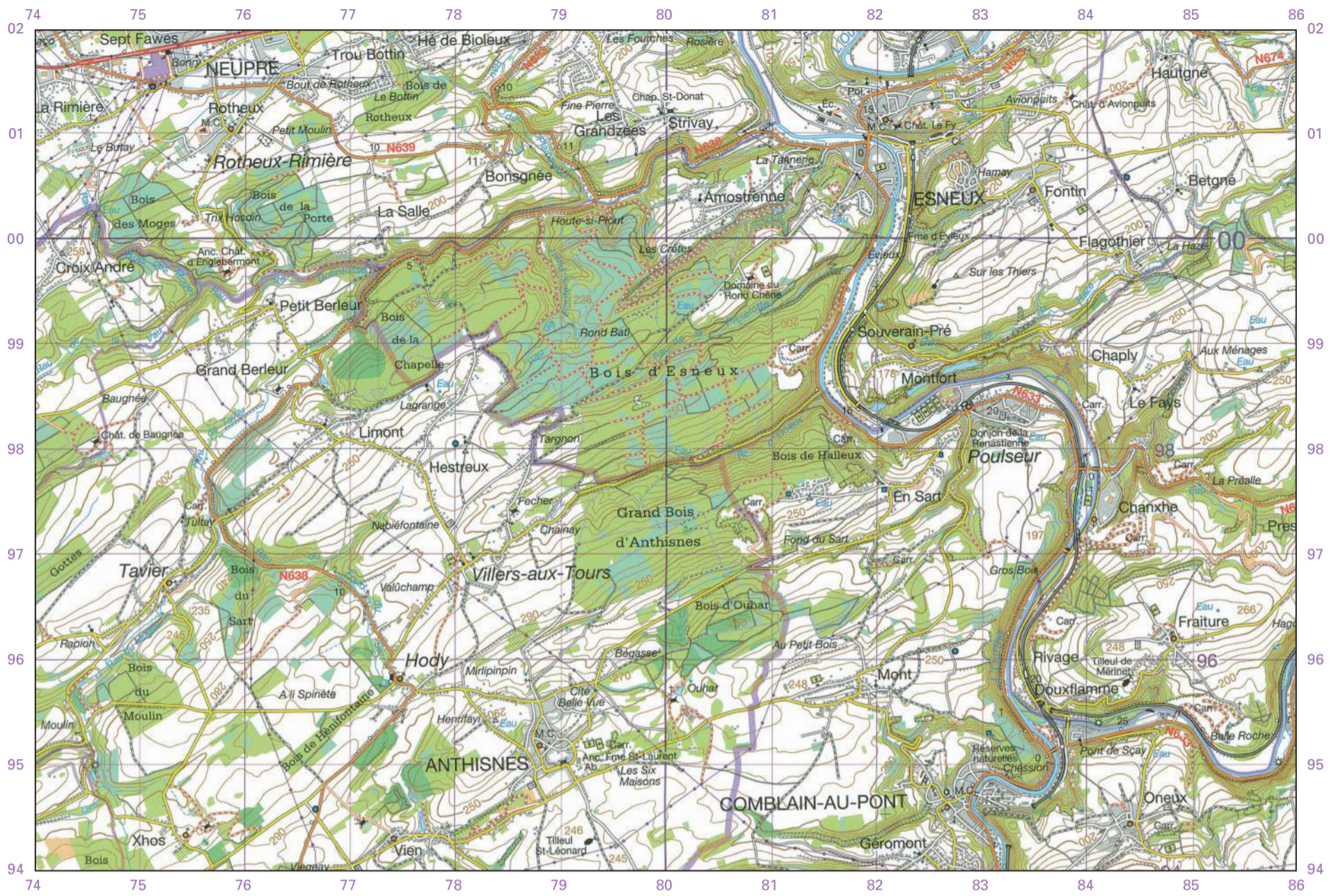
Do not select 'Fit' as this will re-size the map.

You may need to change the paper size to A3.

Ensure the orientation is Portrait.



Four colours should appear above; if not then please return to invigilator.
Four colours should appear above; if not then please return to invigilator.



Elevations in metres – Contour interval: 10m

KEY

Eau	Drinking water installation	Cl.	Clinic
Rau	Brook	Couv.	Convent
Ab.	Abbey	Déb.	Landing stage
Anc.	Former	Ec.	School
Bég.	Convent	Fme	Farm
Bne	Post	M.C.	Town hall
Calv.	Wayside cross	Min	Mill
Carr.	Quarry	Pol.	Integrated police force
Chap.	Chapel or shrine	Pp.	Fire station
Chât.	Castle	Sabl.	Sandpit



	Motorways		Main roads		Secondary roads		Linking roads		Local roads		Roads with traffic restriction		Dual carriageways
	Roads with 4 or more lanes		Roads >= 8m wide		Roads >= 4m and < 8m wide (and/or 2 or 3 lanes)		Road < 4m wide (and/or 1 lane)		Parking: with/without petrol station		Road number - Exit		Sand, salt marsh
	Sports complex - Football pitch - Sports ground		Rocks - Dunes - Spoil heap - Tumulus		Military risk zone, restricted access		Wall - Paved embankment - Row of trees		Embankment, crest - Dyke or earth bank - Steep		(a) Contour - (b) Intermediate contour - (c) Index contour		Contour interval is 10 metres
	Spot height - Height rounded to the metre		Geodetic point: elevated - at ground level		International boundary		Regional boundary		Provincial boundary		District boundary		Municipal boundary
	Industrial, agricultural, commercial building		Silo, storage tank - Miscellaneous buildings		Drinking water installation - building - Water tower		Church - Church out of use - Chapel		Religious building - Religious monument		Monument - Castle - Tower - Cooling tower		Windmill - Paddle wheel - Wind turbine
	Chimney stack - Outstanding tree - Telecommunication mast or tower		Lighthouse - Signal light - Heliport		Stone - Kilometre marker		Cemetery - Ruin - Greenhouse		Deciduous trees - Conifers - Mixed woodland		Orchard/tree nursery, Park		Heath/moor - Brush

	Earth track		Bridge
	Path: (a) stepped - (b) paved - (c) unpaved		Footbridge - Lock - Ship-lift - Wherry, ferry
	Railway: single track - multi-track - H.S.L.		Visible pipeline
	Railway: with tunnel		High voltage line
	(a) Sidings - (b) Station - (c) Halt		Built-up area: (a) high - (b) moderate density
	Level crossings - NE: Not electrified		(c) Isolated building without function specified (d) Isolated building with a specified function
	Cable transport - Conveyor belt		Industrial, agricultural, commercial building
	(a) Bridges - (b) Viaduct - (c) Tunnels		Silo, storage tank - Miscellaneous buildings
	a. River wider than 50m b. River 25m to 50m wide c. River 15m to 25m wide d. River 3m to 15m wide e. Stream f. Intermittent stream g. Lake/Pond h. Swamp, marsh i. Spring, resurgence, sink-hole, well j. Breakwater, pile construction l. Dam		Drinking water installation - building - Water tower

NGI NATIONAAL GEOGRAFISCH INSTITUUT
INSTITUT GEOGRAPHIQUE NATIONAL

NGI - reproduced with the authorization of the Belgian National Geographic Institute www.ngi.be

Any reproduction or adaptation in any form is forbidden

© National Geographic Institute - Brussels Ed.3 - 2015

Technical information on the development and the making of this map can be found on

www.ign.be